

D-8.10 a

Stacking Pressure Relief Valve, size 3

Seated Pilot Stage

Spool-type Main Stage

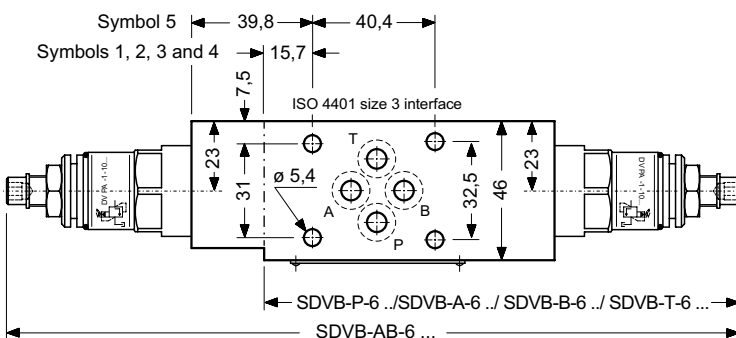
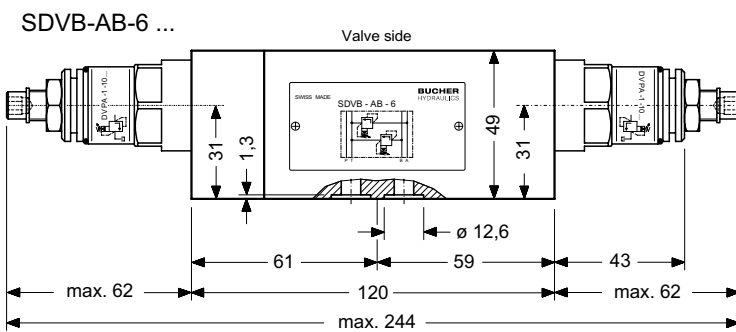
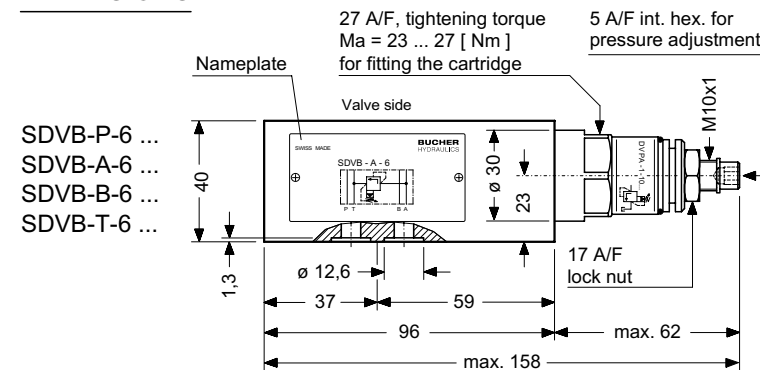
Series SDVB ...

80 l/min, 350 bar

- With two-stage 10 mm pressure relief cartridge DVPA-1-10... (see data sheet D-4.31)
- 350 bar, 80 l/min on all ports
- Optionally available with hand knob, or lockable hand knob, adjuster
- Also available with solenoid controlled two-pressure cartridge WUVPB-1...-10
- With ISO 4401 / CETOP R35H size 3, NFPA D03, DIN 24 340 A6 interface

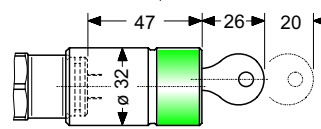


DIMENSIONS

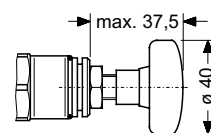


Adjuster style
S
(standard)

OPTIONS

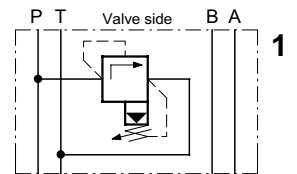


Adjuster style **Z4**
Lockable hand knob
type 2H complies with
Volkswagen Factory
Specification BV 1.09
(factory option only)

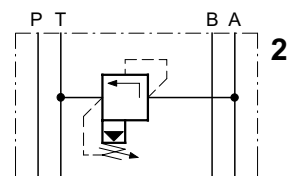


Adjuster style **H**
Hand knob (can be
fitted later by user)

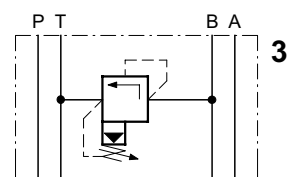
SYMBOLS



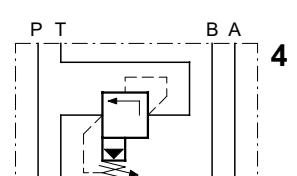
SDVB-P-6 ...



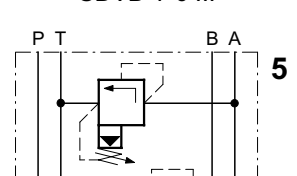
SDVB-A-6 ...



SDVB-B-6 ...



SDVB-T-6 ...



SDVB-AB-6 ...

DESCRIPTION

Series SDVB...-6 stack valves are used for independent pressure relief in the P-, A-, B-, T- or A- and B-lines. They are equipped with the two-stage pressure relief cartridge type DVPA-1-10... as shown on data sheet D-4.31. When closed, the valves shut off the relief path with spool-type leakage (see PERFORMANCE DATA). The screw-in design of the cartridge valve provides for straight-forward, trouble-free maintenance. Interface sealing is by means of O-rings which are retained in counterbores in the valve body.

SCHNITTBILD (SCHEMATISCH)

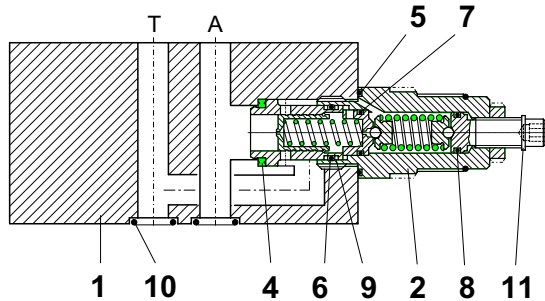
BAUTEILE / ERSATZTEILE

SCHEMATIC SECTION

COMPONENTS / SERVICE PARTS

showing the relevant parts

Ex. SDVB-A-6 ...



| lt. | Qty. | Description | |
|-----|------|-------------------------------------|---------------------|
| 1 | 1 | Stacking body 40 x 46 x 96 | type FB3-06 |
| | 1 | Stacking body 40 x 46 x 96 | type F3-06 |
| | 1 | Stacking body 40 x 46 x 96 | type FA3-06 |
| | 1 | Stacking body 40 x 46 x 96 | type ED2-06 |
| | 1 | Stacking body 49 x 46 x 120 | type J3-06 |
| 2 | 1 | Pressure relief cartridge | type DVPA-1-10 ... |
| 3 | 1 | Seal kit no. DS-259, comprising *): | |
| 4 | 1 | Seal | ø 22,1 / 16,5 x 2,5 |
| 5 | 1 | O-ring no. 021 | ø 23,52 x 1,78 N90 |
| 6 | 1 | O-ring | ø 14,00 x 2,00 N90 |
| 7 | 1 | O-ring no. 013 | ø 10,82 x 1,78 N90 |
| 8 | 1 | O-ring no. 012 | ø 9,25 x 1,78 N90 |
| 9 | 2 | Backup ring | ø 18 / 15,2 x 1,2 |
| 10 | 4 | O-ring no. 012 | ø 9,25 x 1,78 N90 |
| 11 | 1 | Snap ring | ø 9 type SS |

*) = part of seal kit no. DS-259

▲ = available as service part

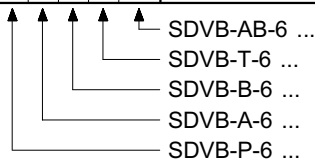
INSTALLATION AND SERVICING

MUST BE CARRIED OUT WITH CARE,
AND BY QUALIFIED PERSONNEL ONLY.

At installation, be sure to mount the valve with the correct faces contacting the adjacent units and with all interface connections lining up properly.

When changing seals, the new seals should be thoroughly oiled or greased before fitting them to the valve.

Use the correct tightening torque when fitting the cartridge.



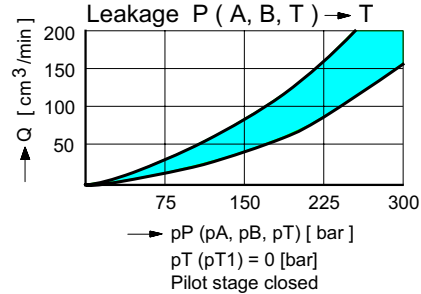
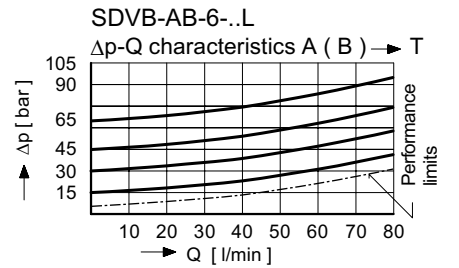
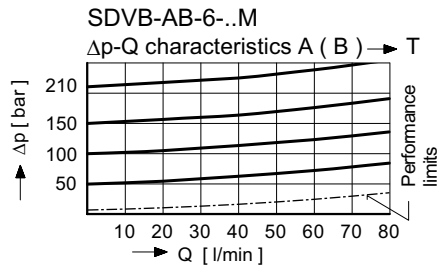
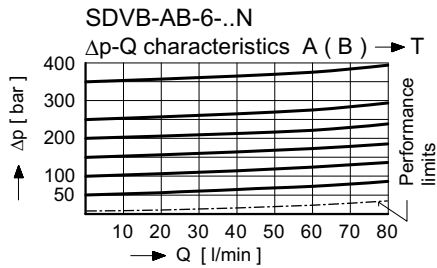
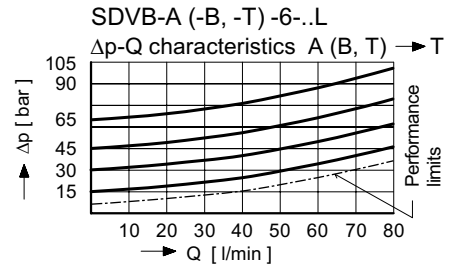
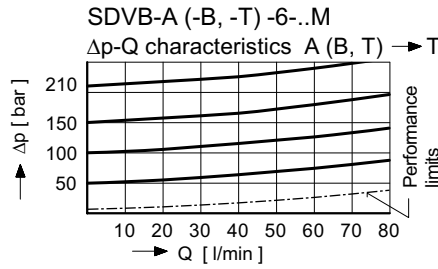
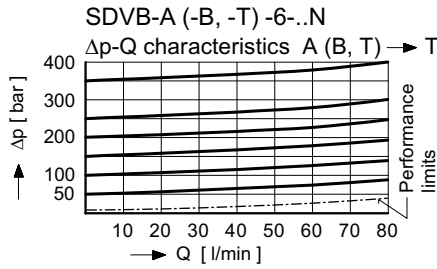
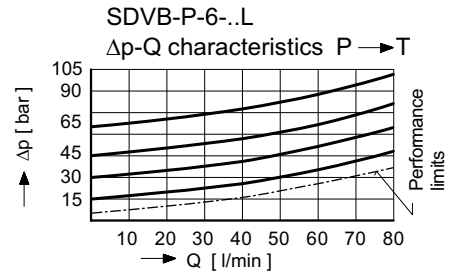
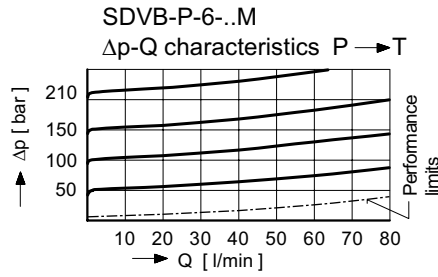
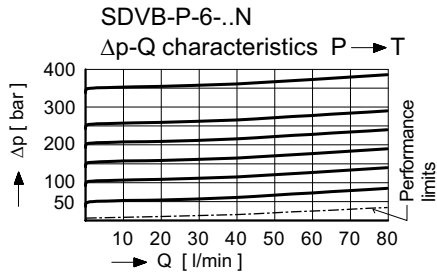
TO ORDER SERVICE PARTS, STATE:

- complete unit model code from the nameplate, including the design number
- data sheet number, including issue date
- part item number from above list
- part description from above list
- quantity required

MAIN CHARACTERISTICS

| | |
|---------------------------|--|
| Type | stacking pressure relief valve |
| Design | two-stage, sliding spool |
| Mounting method | stack mounting |
| Size | ISO 4401 size 3 interface |
| Mass | SDVB-P / -A / -B / -T-6 = 1,37 kg SDVB-AB-6 = 2,15 kg |
| Mounting attitude | unrestricted |
| Flow direction | see symbols |
| Operating pressure | ... 350 bar in P, A, B and T |
| Pressure adjustment range | pressure range N = 10 ... 350 bar pressure range M = 10 ... 210 bar pressure range L = 10 ... 65 bar |
| Fluids | hydraulic oils HL and HLP to DIN 51 524 other fluids - contact BHFRU |
| Min. fluid cleanliness | 18/14 to ISO 4406 / CETOP RP70H 8 ... 9 to NAS 1638 |
| Fluid temperature range | - 25° ... +80° C |
| Ambient temperature | - 25° ... +80° C |
| Viscosity range | 10 ... 650 cSt |
| Flow rate Q max. | recommended: 15 ... 250 cSt 80 l/min (see performance limits) |

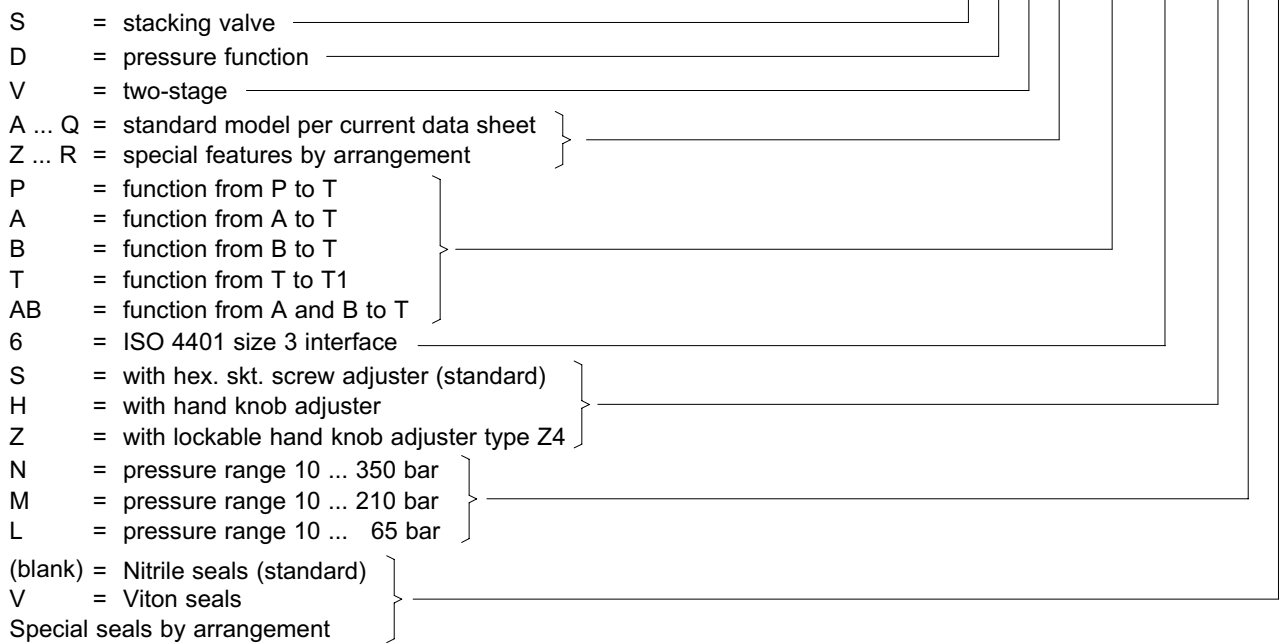
PERFORMANCE DATA Measured with oil viscosity 33 cSt



Rate of pressure change
 when turning the adjuster screw:

| |
|--|
| SDVB-..-6-..N: 1 turn \cong approx. 60 [bar] |
| SDVB-..-6-..M: 1 turn \cong approx. 38 [bar] |
| SDVB-..-6-..L: 1 turn \cong approx. 13 [bar] |

MODEL CODE KEY



RELATED DATA SHEETS

| Old no.: | New No.: | |
|----------|--------------------|--|
| i - 00 | 400-P-010'101-D-00 | Table of interface equivalents |
| i - 31 | 400-P-030'591-D-00 | DIN 24 340 size A6 interface |
| D - 4.31 | 400-P-280'101-D-00 | Two-stage pressure relief cartridge, 10 mm, series DVPA-1-10 ... |